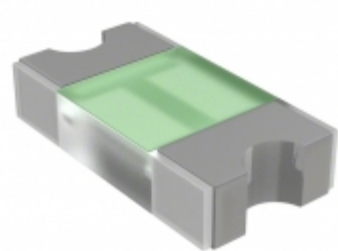


**049401.5NRHF**



**Part Number:** 049401.5NRHF  
**Manufacturer:** Hamlin / Littelfuse  
**Description:** FUSE BRD MNT 1.5A 32VAC/VDC 0603  
**Data sheet:** [494 Series](#)

**RoHS Status:** Lead free / RoHS Compliant  
**Ship From:** Hong Kong  
**Shipment Way:** DHL/Fedex/TNT/UPS/EMS

Images are for reference only.  
 See Product Specifications for product details.  
**Buy 049401.5NRHF with confidence from Component-World.HK, 1 Year Warranty**

[Request For Quotation](#)

**PRODUCT PARAMETER**

<b>Part Number</b>	049401.5NRHF	<b>Manufacturer</b>	<a href="#">Hamlin / Littelfuse</a>
<b>Description</b>	FUSE BRD MNT 1.5A 32VAC/VDC 0603	<b>Lead Free Status / RoHS Status</b>	Lead free / RoHS Compliant
<b>Quantity Available</b>	177398 pcs	<b>Data sheet</b>	<a href="#">494 Series</a>
<b>Category</b>	<a href="#">Circuit Protection</a>	<b>Voltage Rating - DC</b>	32V
<b>Voltage Rating - AC</b>	32V	<b>Size / Dimension</b>	0.063" L x 0.032" W x 0.012" H (1.60mm x 0.81mm x 0.31mm)
<b>Series</b>	494	<b>Response Time</b>	Fast
<b>Packaging</b>	Tape & Reel (TR)	<b>Package / Case</b>	0603 (1608 Metric)
<b>Other Names</b>	0494015NRHF F5809TR	<b>Operating Temperature</b>	-50°C ~ 90°C
<b>Mounting Type</b>	Surface Mount	<b>Moisture Sensitivity Level (MSL)</b>	1 (Unlimited)
<b>Melting Pt</b>	0.0766	<b>Manufacturer Standard Lead Time</b>	9 Weeks
<b>Lead Free Status / RoHS Status</b>	Lead free / RoHS Compliant	<b>Fuse Type</b>	Board Mount (Cartridge Style Excluded)
<b>Current Rating</b>	1.5A	<b>Color</b>	-
<b>Breaking Capacity @ Rated Voltage</b>	35A	<b>Approvals</b>	CSA, UR

Component-World.com is a Reliable Stocking Distributor of Electronic Components. We specialize in all Hamlin / Littelfuse series electronic components. We have 177398 pieces of Hamlin / Littelfuse 049401.5NRHF in stock available now. Request a quote from electronics components distributor at Component-World.com, our sales team will contact you within 24 hours.  
 RFQ Email: [info@Components-World.com](mailto:info@Components-World.com)

**RELATED PRODUCTS**

	<b>Part#:</b> <a href="#">049402.5NRHF</a> <b>Description:</b> FUSE BRD MNT 2.5A 32VAC/VDC 0603	<b>Manufacturers:</b> <a href="#">Hamlin / Littelfuse</a>	<a href="#">RFQ</a>
	<b>Part#:</b> <a href="#">0494481611</a> <b>Description:</b> CONN MICRO SD/SIM CARD PUSH-PUSH	<b>Manufacturers:</b> <a href="#">Affinity Medical Technologies - a Molex company</a>	<a href="#">RFQ</a>
	<b>Part#:</b> <a href="#">0494003.NRHF</a> <b>Description:</b> FUSE BOARD MNT 3A 32VAC/VDC 0603	<b>Manufacturers:</b> <a href="#">Hamlin / Littelfuse</a>	<a href="#">RFQ</a>
	<b>Part#:</b> <a href="#">0494004.NR</a> <b>Description:</b> FUSE BOARD MNT 4A 32VAC/VDC 0603	<b>Manufacturers:</b> <a href="#">Hamlin / Littelfuse</a>	<a href="#">RFQ</a>
	<b>Part#:</b> <a href="#">0494005.NR</a> <b>Description:</b> FUSE BOARD MNT 5A 32VAC/VDC 0603	<b>Manufacturers:</b> <a href="#">Hamlin / Littelfuse</a>	<a href="#">RFQ</a>
	<b>Part#:</b> <a href="#">049403.5NR</a> <b>Description:</b> FUSE BRD MNT 3.5A 32VAC/VDC 0603	<b>Manufacturers:</b> <a href="#">Hamlin / Littelfuse</a>	<a href="#">RFQ</a>
	<b>Part#:</b> <a href="#">0494005.NRHF</a> <b>Description:</b> FUSE BOARD MNT 5A 32VAC/VDC 0603	<b>Manufacturers:</b> <a href="#">Littelfuse Inc.</a>	<a href="#">RFQ</a>
	<b>Part#:</b> <a href="#">049401.5NR</a> <b>Description:</b> FUSE BRD MNT 1.5A 32VAC/VDC 0603	<b>Manufacturers:</b> <a href="#">Hamlin / Littelfuse</a>	<a href="#">RFQ</a>
	<b>Part#:</b> <a href="#">04941.25NRHF</a> <b>Description:</b> FUSE 1.25A 32V 0603	<b>Manufacturers:</b> <a href="#">Hamlin / Littelfuse</a>	<a href="#">RFQ</a>
	<b>Part#:</b> <a href="#">0494002.NR</a> <b>Description:</b> FUSE BOARD MNT 2A 32VAC/VDC 0603	<b>Manufacturers:</b> <a href="#">Hamlin / Littelfuse</a>	<a href="#">RFQ</a>
	<b>Part#:</b> <a href="#">0494481411</a> <b>Description:</b> CONN MICRO SD/SIM CARD PUSH-PULL	<b>Manufacturers:</b> <a href="#">Affinity Medical Technologies - a Molex company</a>	<a href="#">RFQ</a>
	<b>Part#:</b> <a href="#">0494002.NRHF</a> <b>Description:</b> FUSE BOARD MNT 2A 32VAC/VDC 0603	<b>Manufacturers:</b> <a href="#">Hamlin / Littelfuse</a>	<a href="#">RFQ</a>
	<b>Part#:</b> <a href="#">0494001.NRHF</a> <b>Description:</b> FUSE BOARD MNT 1A 32VAC/VDC 0603	<b>Manufacturers:</b> <a href="#">Hamlin / Littelfuse</a>	<a href="#">RFQ</a>
	<b>Part#:</b> <a href="#">04941.75NR</a> <b>Description:</b> FUSE 1.75A 32V 0603	<b>Manufacturers:</b> <a href="#">Hamlin / Littelfuse</a>	<a href="#">RFQ</a>
	<b>Part#:</b> <a href="#">04941.25NR</a> <b>Description:</b> FUSE 1.25A 32V 0603	<b>Manufacturers:</b> <a href="#">Hamlin / Littelfuse</a>	<a href="#">RFQ</a>
	<b>Part#:</b> <a href="#">0494003.NR</a> <b>Description:</b> FUSE BOARD MNT 3A 32VAC/VDC 0603	<b>Manufacturers:</b> <a href="#">Hamlin / Littelfuse</a>	<a href="#">RFQ</a>
	<b>Part#:</b> <a href="#">049403.5NRHF</a> <b>Description:</b> FUSE BRD MNT 3.5A 32VAC/VDC 0603	<b>Manufacturers:</b> <a href="#">Hamlin / Littelfuse</a>	<a href="#">RFQ</a>
	<b>Part#:</b> <a href="#">049402.5NR</a> <b>Description:</b> FUSE BRD MNT 2.5A 32VAC/VDC 0603	<b>Manufacturers:</b> <a href="#">Hamlin / Littelfuse</a>	<a href="#">RFQ</a>
	<b>Part#:</b> <a href="#">04941.75NRHF</a> <b>Description:</b> FUSE 1.75A 32V 0603	<b>Manufacturers:</b> <a href="#">Hamlin / Littelfuse</a>	<a href="#">RFQ</a>
	<b>Part#:</b> <a href="#">0494004.NRHF</a> <b>Description:</b> FUSE BOARD MNT 4A 32VAC/VDC 0603	<b>Manufacturers:</b> <a href="#">Hamlin / Littelfuse</a>	<a href="#">RFQ</a>

**Related keywords for 049401.5NRHF**

Hamlin / Littelfuse 049401.5NRHF	049401.5NRHF distributor	049401.5NRHF supplier	049401.5NRHF price
049401.5NRHF download datasheet	049401.5NRHF datasheet	049401.5NRHF stock	buy 049401.5NRHF
Hamlin / Littelfuse 049401.5NRHF	Littelfuse Inc. 049401.5NRHF	Littelfuse 049401.5NRHF	Teccor / Littelfuse 049401.5NRHF
TE Connectivity Raychem Circuit Protection / Litte 049401.5NRHF	Wickmann / Littelfuse 049401.5NRHF		